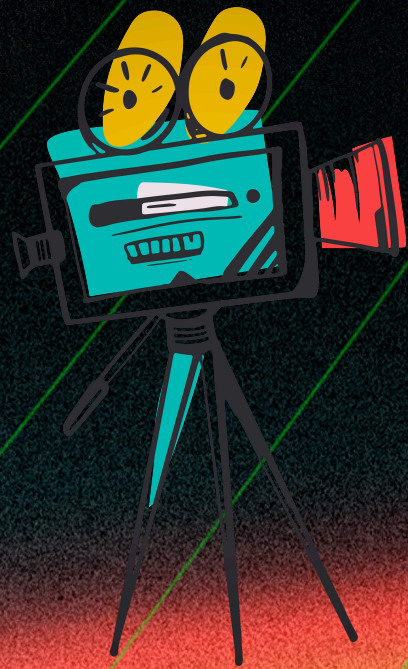


# ESTABLISHING SHOTS



## VOCABULARY

ESTABLISHING SHOT

MASTER SHOT

WIDE SHOT

MEDIUM FULL SHOT

MEDIUM SHOT

MEDIUM CLOSE UP



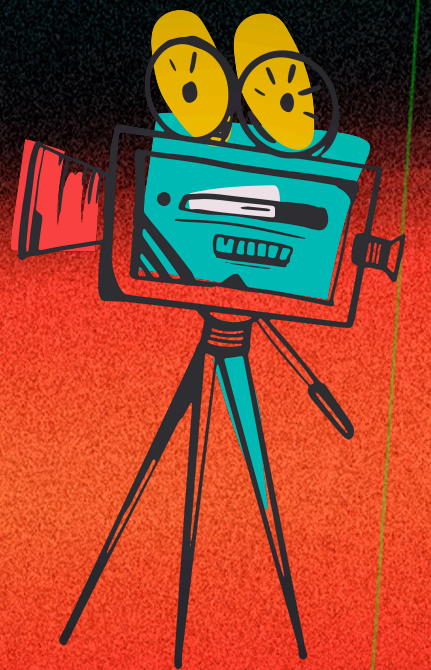
# DISCUSSION QUESTIONS

Which shot captures the top of the head to the shoulders?

Which shot establishes characters and environments?

Which shot captures head to toe?

Which shot captures the entire scene?







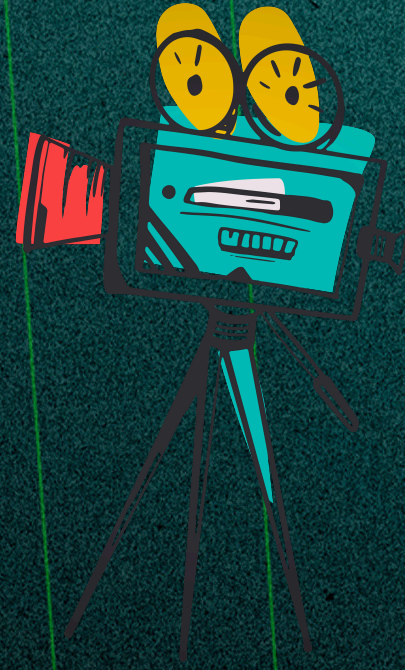
# TOP 3 WALKAWAYS

Understand the 9 camera shots;

Understand how to use each shot;

Understand how to capture the  
characters, environments and  
emotions.





# Camera Operator Cinematographer

**You can work for a production company  
or a self produced company**

