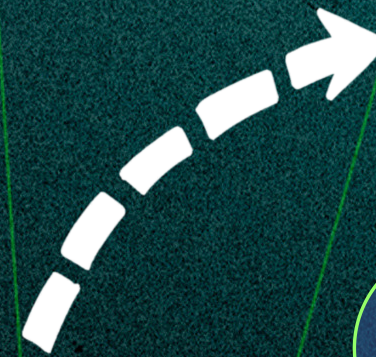
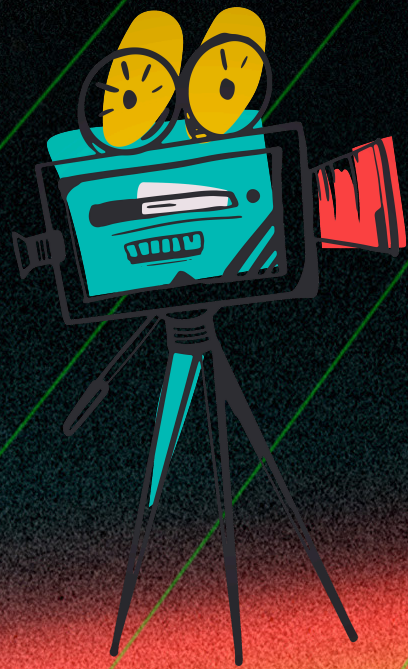


# DEVELOP A THREE-ACT STRUCTURE



## VOCABULARY

INCITING EVENT

FIRST PLOT POINT

FIRST PINCH POINT

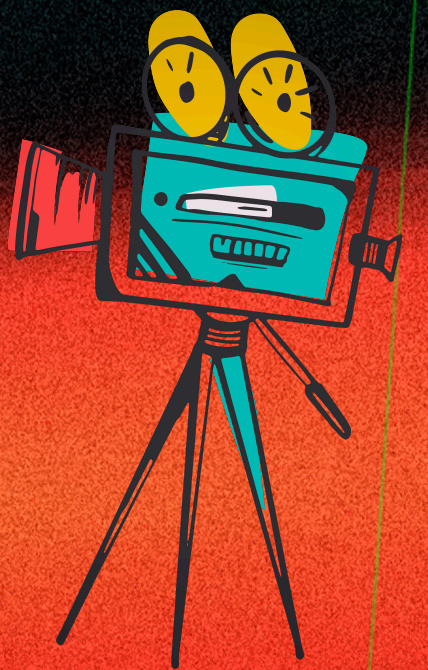
THIRD PINCH POINT

# DISCUSSION QUESTIONS

Which act establishes the characters and their environments?

Which act presents the climax?

Which act shows a character's turning point?



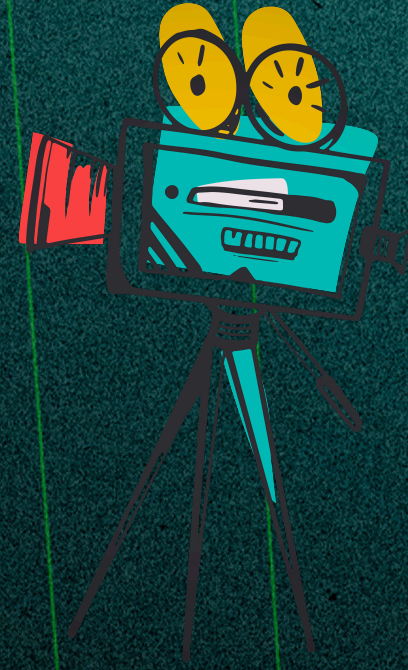


# TOP 3 WALKAWAYS

Act one is establishing the characters and their environments as they react to introduced conflict;

Act two, exploring the character's turning point as they are active in their high stake circumstances and rising risks;

Act three, concludes the climax as the characters engage in their final confrontation with their circumstances leading toward a resolution.



**Hired Writer**

**Freelance Writer**

**Write for self-produced projects**

